



## Valentia Place, Brixton, SW9

2 bedroom flat to let

**£440 Per Week**

Furnished

### Property Details

This two double bedroom flat is set in a modern development with hardwood flooring through-out. Both bedrooms are spacious and bright doubles and one of the bedrooms benefits from an en-suite shower room. The family bathroom is a modern bathroom of a good size. The open plan kitchen/ reception room has a large window making it bright and airy. It's located in the heart of Brixton close to all the local amenities, bars and transport links.

This quiet and neighbourly street is tucked away in a sought-after pocket with the restaurants, supermarkets and bars of Acre Lane a short walk away. Within a ten-minute stroll is everything that Brixton has to offer, from music venues and the extremely popular Brixton Village to large brand shops and cracking transport links, first stop on the Victoria tube line and Brockwell Park iconic 1930s Lido also a short walk away.

### Features

- Two bedrooms
- Two bathrooms
- Open plan reception
- Bright and airy
- Secure modern development
- Close to central Brixton and Transport links

Council tax band D      EPC rating C (69)



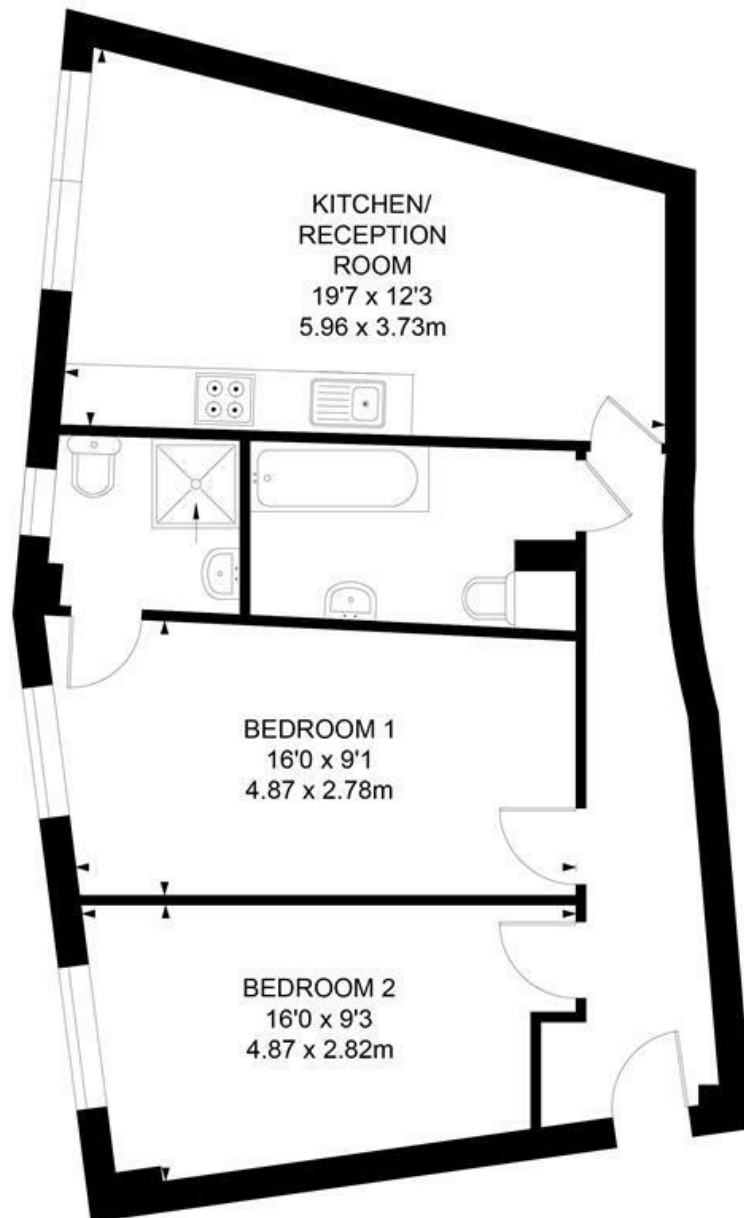
Valentia Place, Brixton, SW9

## Valentia Place, SW9

### 2 Bedroom Flat

APPROXIMATE GROSS INTERNAL AREA :

654 SQ FT / 60.76 SQ M



## SECOND FLOOR



While we try our very best, floor plans are produced as a guide only and we take no responsibility for the precise accuracy with which any property is represented.



Valentia Place, Brixton, SW9

